



# EpoxySystems' System 315 Polymeric Chip Flooring

Floors have a special role to play in interior design. The heavy technical demands made on floors often make the use of certain decorative products simply impossible. The use of color chips can change all that! Color chips are increasingly being used in combination with "wet" products such as [EpoxySystems'™ System 315 Polymeric Multi-Colored Chip Floor Resurfacing System](#) to create decorative floors with more to offer than other ornamental products...Quality!

The concept is simple. It is a combination of chips and flooring resin. A new product is "born". The flooring resin plays a leading role in the quality of the flooring system. The color chips provide the additional decorative effect.

## **What is new and unique?**

At last there is a high quality seamless floor finish which can be provided in every desirable color combination. Flooring experts have been using this process for a long time. [Epoxy Systems, Inc.](#), which is responsible for the quality of the floor resin, has not stood still over the years. It has developed various new types of resins like [EpoxySystems'™ System 315](#). It even has developed a water-based resin system for walls. These resins are easy to use, by any skilled coating professional. For potential customers, the final result is most certainly new.

## **Selecting your color**

First pick the primary (background color). This color should be at least 40 to 50% of you total mix. The background color is picked from this color chart:



Then pick 2 or more accent or contrasting colors from the chart below, or the chart above:

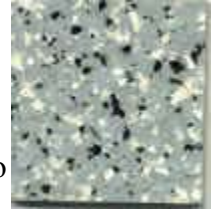


Decide what proportions you want of each color by percent. And we will make it to your order, in multiples of 55 lbs.

## Three easy steps of application

### The "sandwich" system

EpoxySystems' Chip system is easier to use than most people think. This ease of use also automatically means that work can be done more quickly. Saving time and money, while increasing quality!



**Step 1: A layer of flooring resin is applied to a suitable substrate.**



**Step 2: The application of the color chips can be done by broadcasting the floor to saturation (refusal).**



**Step 3: The transparent top coat, which is applied in one or more layers, determines the final thickness.**



As dazzling as the visual effect is, there is more to making a product successful. There are many factors contributing to the success of EpoxySystems' Chip Flooring.

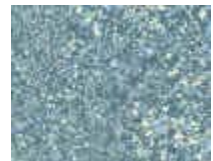
### Ease of Application

Many floor companies have difficulty finding good floor layers. The introduction of an easy-to-install product will be appreciated by everyone. The Chip Flooring precludes processing mistakes. It is "fool-proof", because an excess of chips are spread on the still wet floor paint. The extra chips are simply swept up after the floor has dried and can be reused. Taping off is unnecessary. The chips only adhere to the places where the flooring resin has been applied. This inherent simplicity is also the basis for the do-it-yourself product.



### Little Preparation

The standard preparation of a floor is necessary when using the Chip Flooring System. The chips cover small cracks and holes, because of the light structure and multi-color effect of the final result. Uneven spots are hardly noticeable. See Epoxy Systems' Technical Bulletins for more details about proper surface preparation.



### Cove Base



An integral cove base can be installed to turn your room into a virtual "bathtub".

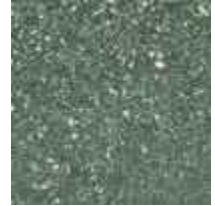


## **Easy to Disinfect**



The highest requirements apply, especially to floors with heavy traffic. The Chip Flooring System offers a finish which is very easy to keep disinfected. The seamless and sealed surface can be cleaned in every possible way. Even with a high pressure water spray. The seamless sealed surface prevents the entry of dirt and bacteria. We can even add an optional anti-microbial to your Chip

Flooring.



## **Anti-skid**



A floor made of EpoxySystems' Flooring Chips is slightly textured and it is this texture that gives the floor good anti-skid qualities. This is especially important for areas where the floor gets wet such as entry ways, and pool sides.

## **Durable and Reparability**

The use of [EpoxySystems™ System 315](#) provides a durability which can compete with similar types of decorative floors, with a much higher level of durability and reparability. Should the floor show scuffing after intensive use; this can be quickly solved by applying another layer of the transparent top coat. The floor looks new again after just one application.

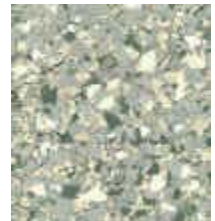
## **Color-Fast**

Only the best color-fast pigments are used to produce color chips. Even under exposure to strong ultraviolet light, hardly any fading occurs. Used with [EpoxySystems™ System 315](#) or other flooring resin that does not fade, the color chips create a strong, color-fast system.



## **Endless Choice of Colors and Effects**

EpoxySystems' Color Chips are supplied in many colors and different sizes. Making the right combination of colors creates extraordinary effects. This means that any requirement can be met. The thickness of the top coat can also be varied, yielding different appearance and anti-skid properties.



## **Proven Experience**



Epoxy Systems, Inc. can assist with its large store of experience. Epoxy Systems, Inc. are Consultants, and Resin Compounders. Technical services are handled by the Owner's of Epoxy Systems, Inc. who each average over 20 years of field experience.

For more information please contact:

## **Epoxy Systems, Inc.**

Florida and Vermont

352-489-1666 (voice)

352-465-3497 (fax)

info@epoxy.com (Internet)

www.epoxy.com (WWW)

This information is presented in good faith to assist the user in determining whether our products are suitable for application. No warranty or representation, however, is intended or made, nor is protection from any law or patent to be inferred, and all patent rights are reserved. 0103



# Epoxy Systems'<sup>TM</sup> Product #315BC

## 100% Solids Hi-Build Pigmented Polymer Coating

### **GENERAL DESCRIPTION**

Product #315BC a two component, 100% solids Pigmented Polymer Hi-Build Polymer coating used for high indoor traffic areas where abrasion resistance is required; for protection against mild corrosion; and as a decorative waterproof coating for walls, floors, tanks, etc., and as a base-coating for Epoxy Systems' Chip Flooring System.

### **ADVANTAGES**

- *Moisture Insensitive*
- *Ceramic like finish*
- *Sprayable*
- *Solvent Free*
- *Waterproof*
- *Extremely Durable*
- *Chemical Resistant*

### **SURFACE PREPARATION**

Surface must be clean and sound. Remove all dirt, laitance, grease curing compounds and other foreign matter by sandblasting, mechanical abrasion, or acid etching. Remove water and dust from all surfaces with an oil-free blast immediately prior to application.

### **MIXING INSTRUCTIONS**

Temperature of Product #315BC must be 50 degrees F or above at time of mixing. Stir each component separately before blending. Mix two parts by volume of Part A with one part by volume of Part B for three minutes with a low speed electric drill motor equipped with a mixing paddle.

### **APPLICATION**

**As a Coating System:** Apply Product #315BC with a roller, brush, or spray equipment. Two coats are recommended. Thickness per coat should be 7-10 mils. Seven days cure time is required to reach maximum chemical resistance.

**As a Base-Coat For Epoxy Systems' Chip Flooring System:** Apply Product #315BC with a roller, brush, or spray equipment at a rate of about 200 square feet per gallon, per coat depending on the substrate. Then broadcast with Epoxy Systems' Chips. When dry Topcoat with Epoxy Systems' Product #315.

## **LIMITATIONS**

**DO NOT** apply at temperatures below 40 degrees F. Surface must be dry. Do not mix the hardener from 315BC with the resin from 315 nor the resin from 315BC with the hardener of 315 or any other product. This cross mixing of materials has not been tested. Doing so may interfere with the proper cure of these materials and other undesirable effects.

## **SAFETY PRECAUTIONS**

Prolonged or repeated exposure may cause eye and skin irritation. If contact occurs, wash immediately and seek medical help. Use safety glasses with side shields and wear protective rubber gloves.

## **CLEANING**

All tools and equipment should be cleaned before the system gels. Use MEK, Acetone, or any lacquer solvent.

## **APPLICATION PROPERTIES @77 DEGREES F**

Mix Ratio.....	2:1 By Volume
Viscosity (mixed).....	950 CPS
Pot Life (200 gr.).....	30 minutes
Tack Free to Touch.....	10-12 Hours
Initial Cure.....	24 Hours
Final Cure.....	5 Days
Packaging Unit Size.....	1 gal., 5 gal.
Standard Colors for System 315.....	Light Gray, Dark Gray, Taupe, Charcoal, Old Gold, Mocha, Brick Red, Slate Blue, Colonial Green, Deep Blue, Black, Caramel, Gem Grey, Ivy.

## **TENSILE PROPERTIES**

Tensile Strength (ASTM D-638).....	8500 psi. min.
Elongation.....	10%

For more information about this product or any other Epoxy Systems™ product, please contact:

### **Epoxy Systems, Inc.**

Florida & Vermont  
352-489-1666  
352-465-3497 (fax)  
info@epoxy.com (email)  
www.epoxy.com (WWW)

---

This information is presented in good faith to assist in determining whether this product is suitable for application. No warranty or representation, however, is intended or made, nor is protection from any law or patent to be inferred, and all patent rights reserved. 0103

---

# Epoxy Systems'<sup>TM</sup> Product #315

## Seamless Polymeric Multi-Colored Floor Resurfacing System



### **GENERAL DESCRIPTION**

Product #315 is a seamless, plural component, liquid applied, 100% solids polymeric resin used to produce colored flake and colored quartz floor resurfacing system with superior wear, and chemical resistance. Product #315 with “multi-colored” flakes, and colored aggregate produces a durable, easy to maintain floor, on both new and old surfaces.

### **APPLICATIONS**

Aisle Ways  
Assembly Plants  
Bakeries  
Basement Floors  
Bottling Plants  
Break Rooms  
Cafeterias  
Canning Plants  
Car Washes  
Cells  
Church Floors  
Classroom Floors  
Corridors  
Educational Facilities  
Entrances  
Food Plants  
Health Care Facilities  
Hospitals  
Kennels  
Kitchens  
Laboratories  
Law Enforcement Facilities  
Laundries  
Locker Rooms  
Manufacturing Areas  
Marine Surfaces  
Meat Preparation Areas

Mortuaries  
Nuclear Plant Floors  
Offices  
Photography Processing Areas  
Power Plants  
Printing Plants  
Produce Preparation Areas  
Pool Decks  
Ramps  
Research Facilities  
Rest Rooms  
Rest Area Buildings  
Restaurants  
Semiconductor Plants  
Sewer Plants  
Shop Floors  
Shopping Centers  
Shower Rooms  
Store Floors  
Show Rooms  
Supermarkets  
Veterinary Facilities  
Water Plants  
Warehouses  
& many others

## **ADVANTAGES**

*LOW ODOR  
STRONG YET RESILIENT  
VARIABLE SURFACES FROM NON-SLIP TO SMOOTH  
ABRASION RESISTANT*

## **SURFACE PREPARATION**

Surface must be clean and sound. Remove all dirt, laitance, grease curing compounds and other foreign matter by sandblasting, mechanical abrasion. If acid etching is used follow with abrasive or mechanical abrasion. Remove water and dust from all surfaces with an oil-free blast, or vacuum, immediately prior to application.

## **MIXING INSTRUCTIONS**

Temperature of Product #315 must be 60 degrees F or above at time of mixing. Stir each component separately before blending. Mix two parts by volume of Part A with one part by volume of Part B for three minutes with a low speed electric drill motor equipped with a mixing paddle.

## **APPLICATION**

**BASECOAT:** Product #315 can be applied with brush, roller, airless sprayer or squeegee. Apply a coat of #315 to surface to be finished, doing only a small area at a time, applying ESI™ Color Flakes to the surface of the wet resin. This can be done by hand or mechanical means. Make sure that the entire surface is completely covered (no shiny spots visible). Allow them to dry. Then remove excess Colored Flakes. Repeat this process a second time if a “three dimensional” effect is desired.

**TOPCOAT:** Apply a squeegee, roll, or spray coating of clear #315 to the surface of the basecoat. If a smoother finish is required, the surface may be sanded and additional coat(s) of clear #315 applied.

## **LIMITATIONS**

New concrete should be at least 28 days old. Temperature of substrate must be above 50 degrees F. DO NOT thin. For outdoor use contact Epoxy Systems, Inc. for technical assistance.

## **OPTIONAL FEATURES**

INTEGRAL COVE BASE  
MEDIUM, FINE, and SMOOTH TEXTURES

## **SAFETY PRECAUTIONS**

Prolonged or repeated exposure may cause eye and skin irritation. If contact occurs, wash immediately and seek medical help. Use safety glasses with side shields and wear protective rubber gloves.

## **CLEANING**

All tools and equipment should be cleaned before the system gels. Use MEK, Acetone, or any lacquer solvent.

## **APPLICATION PROPERTIES @77 DEGREES F**

Viscosity (mixed).....	450 CPS
Pot Life (200 gr.) .....	30 minutes
Cure Time (Walk-on Traffic).....	24 hours
Cure Time (Truck Traffic) .....	48 Hours
Final Cure.....	7 Days
Packaging (unit size).....	3 gal., 15 gal, and 45 gal. Units.

## **PHYSICAL PROPERTIES (neat)**

Bond Strength (ASTM C-882).....	2110 psi
Flexural Strength (ASTM C-580-68).....	6100 psi (7 days)
Compressive Strength (ASTM D-695) ..	9900
Absorption (ASTM D-570) .....	0.7%
Thermal Shock .....	40 Hrs @10 Degrees F., 3 Min. @ 212 Degrees F. shock water 33 Degrees F.
Hardness (Shore D).....	65 @ 24 Hours, 75 @ 7 days

For additional information please contact:

### **Epoxy Systems, Inc.**

352-489-1666

352-465-3497 (fax)

info@epoxy.com(Internet)

www.Epoxy.com (WWW)